

Epson Series UV Flatbed Printer

2.5 X 1.3 meter

250 x 130cm 宽幅UV平板打印机

3 Printheads

三喷头

Variable Dot

可变墨滴

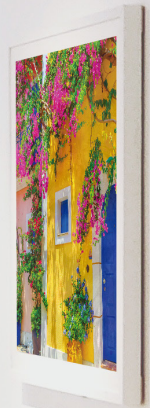
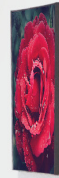
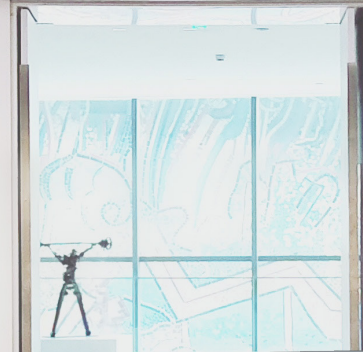
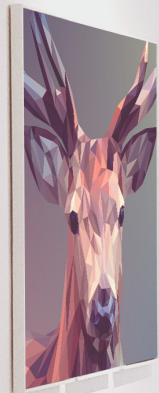
4/6-Color

4/6色写真

White & Varnish

白色和光油

3 Size Available 提供三种尺寸



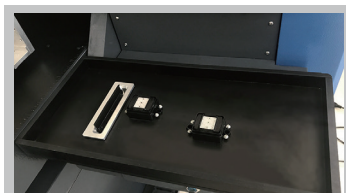
● Features 特点



High Precision Screw Drive

Y axis is using screw drive transmission mode which has far better precision than belt drive.

Y轴采用高品质丝杆取代传统皮带传动以提高设备整体精度。

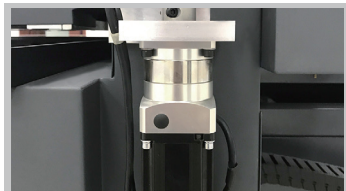


Ultra Wide Capping and Clean System

Clean the printhead and wipe the ink from the printhead surface with just one click

超宽墨栈

只需轻轻一点，清洁喷头并从喷头表面擦去溢出墨水



High-power X Motor

Compared to those printers with second level belt transmission, our motor design ensures higher resolution and stability

大功率X电机

确保更高的分辨率和稳定性

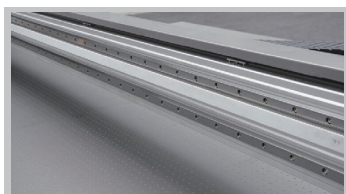


Low Ink Alarm

Machine gives LED light signal to alarm user to fill ink. No need to interrupt any printing job any more

低墨量警报

机器发出LED灯信号，提醒用户填充墨水



Aluminum Carriage Beam

We make the carriage beam with one-time molding aluminum as it is another key factor to high resolution printing

铝制车架梁

一次成型的铝制车架梁，确保打印的高分辨率

- ★ The high precision machine frame ensures perfect print resolution
高精度的机器框架确保完美的打印分辨率
- ★ Printhead is wrapped and heated inside a printhead base
打印头被包裹并在打印头基座内加热，最大限度地降低了低温造成的影响
- ★ X axis's gear fixation components are processed with one-time molding technology
X轴的齿轮固定部件采用一次成型技术进行加工，以确保最高分辨率标准
- ★ X axis is equipped with dual guide rail which ensures smooth movement of carriage
X轴配备双导轨，确保小车的平稳运动
- ★ Y axis is using screw drive transmission mode
Y轴采用丝杠传动方式，比皮带传动精度高得多



● Specification 参数

| | | | |
|------------------------|---------------|--|-----------------------|
| Model No. | 型号 | FB-2513 | |
| Printhead | 喷头 | 2 Epson DX8 | 3 Epson DX8 |
| Resolution | 精度 | Max 1440 dpi | |
| Media 耗材 | Thickness 厚度 | 10 cm MAX | |
| | Size 尺寸 | 2500 x 1300 mm | |
| | Types 种类 | Glass, Acrylic, Ceramic, Metal, Paper, Wood, Leather, PVC, PP, PE, PTFE Etc. 玻璃, 亚克力, 陶瓷, 金属, 纸, 木板, 皮革, PVC, PP, PE, PTFE等 | |
| Speed 速度 | Draft 草图 | 12 sqm/h (Color+White) | 60 sqm/h (Color only) |
| | Standard 标准 | 8 sqm/h (Color+White) | 30 sqm/h (Color only) |
| | Quality 精细 | 6 sqm/h (Color+White) | 20 sqm/h (Color only) |
| Ink 墨水 | Type 墨水 | UV Ink | |
| | Color 颜色 | C M Y K / C M Y K Lc Lm + White or Varnish | |
| | Capacity 墨瓶 | 500 ml | |
| | Dry System 干燥 | UV-LED Light System | |
| PC Operation System 系统 | 系统 | Windows 7, 32/64bit, RAM≥8G | |
| Environment 环境 | 环境 | Temperature: 20-28 ℃, Humidity: 40%-60% | |
| Rip Software 软件 | 软件 | Maintop / Photoprint / Onyx(optional) | |
| Image Format 图片格式 | 图片格式 | TIFF, JPEG, EPS, PDF... | |
| Power 电源 | 电源 | Max 3.6KW, AC 50/60Hz, 220V(±10%)>12A | |
| Size 尺寸 | Machine 机器 | L3700 x W2300 x H1550 mm | |
| | Packing 包装 | L3700 x W2300 x H1600 mm | |
| Weight 重量 | Machine 机器 | 900 KG | |
| | Packing 包装 | 1000 KG | |

Specifications are subject to change without notice. 以上参数可能随机器版本改变，请以厂家最新数据为准。